

hydrosphere SERIES

Semi-Onground Pool by Doughboy

SIMPLE SHAPES. SIMPLE INSTALLATION. SIMPLE DESIGNS.

Inground Options Available



POOL SHAPE OPTIONS

ROUNDS – OVALS – GRECIANS



ROUND
15', 18', 21',
24, 28'



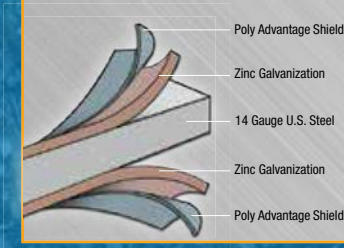
OVAL
12' x 24', 15' x 30'
18' x 33'



GRECIAN
12' 3" x 24' 3",
14' 3" x 28' 3",
16' 6" x 32' 6",
18' 6" x 36' 6"

Unparalleled in it's Strength

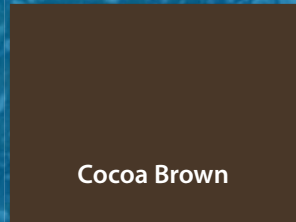
It's strong because it's made of quality american-made steel



...which features **Poly Shield Protection**,
the new standard in steel building materials
and **SPERT Technology**
(Self-Piercing Riveting Technology)



Pool Paneling Color Options



- Inground strength that will hold up against outside pressure
- Impact Resistant Half Panels
- UV Resistant
- Chemical Resistant, Including Salt
- Thermal Conductivity Energy Efficient

HYDROSPHERE TRIM FEATURES

Standard Top Rail



Optional Deck Mount



Patent Pending Top Rail

T-Track Trim Kit

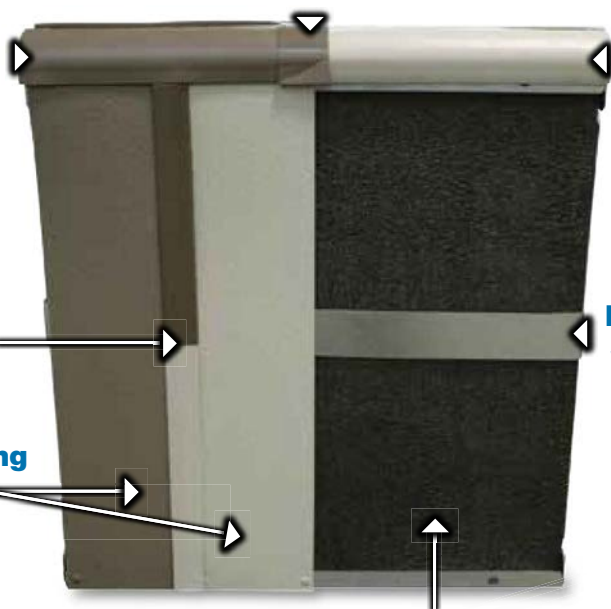
Patent Pending Paneling with Color Options

Trim Clip

Full Radius Design Top Rail - No Miter Cuts

Paneling Support

R10 Insulation Kit - optional



STEPS

Locking Straps and Rubber Gasket

Factory installed and easy to mount vinyl liner material.

Structural Integrity

100% specialty engineered resins and fiberglass. No filler, no additives!

Standard PVC Support System

Standard 2" PVC tubes. The construction of our stairs boasts a massive brace system consisting of 3" x 6" horizontal beams supported by 2 3/8" vertical supports making it one of the strongest and fastest to install in the industry.



6' Radius Step



6' Straight Step

Straight & Radius Steps are Available in White, Blue and Gray.

FILTRATION



POWERLINE XP I PUMP

- 1½ HP dual speed
- 1½" hose fitting
- Thermal protected motor
- Strainer pot wrench included
- 6 ft (non UL) cord



POWERLINE XP III PUMP

- 1½ HP, self-priming heavy duty motors
- 1½" hose fitting
- Thermal protected motor
- Self-contained pump base
- Can be converted from 115V to 220V
- 3 ft (NEC) cord with twist lock plug



25" SAND FILTER

- 25" tank
- 7 position valve
- 1½" valve
- Sand capacity – 300 lbs.

LINERS

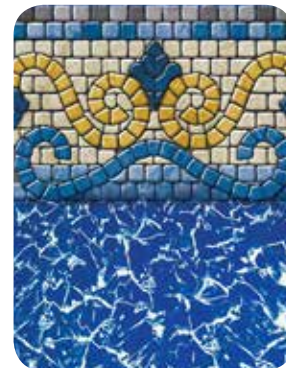
Special 100% virgin-vinyl formula that resists chemicals and ultraviolet rays.

Therma-Seal™ Technology – sealing technique that provides durability and supreme quality. We are so confident with this process that we cover our liner seams with a 100% lifetime warranty.

Inground liner patterns available upon request.



Dynasty - 20 mil Beaded Liner
flat bottom only



Majestic - 20 mil Beaded Liner
flat bottom only

ACCESSORIES

SKIMMER – COVERS – LIGHTS



CLASSIC DELUXE THRU-WALL SKIMMER

Designed for Hydrosphere Semi-Onground

- **Industry exclusive, U-joint skimmer gasket** provides extra protection against leaks
- **Large skimmer opening** allows maximum water flow for more efficient skimming
- **Tough, corrosion-resistant, large capacity leaf basket** extends times between cleaning
- **Vacuum hook-up** allows for easy, convenient vacuuming and pool maintenance
- **Safe, self-sealing vacuum port closure** covers vacuum port when pool is in use



INGROUND SKIMMER

Designed for Hydrosphere Inground

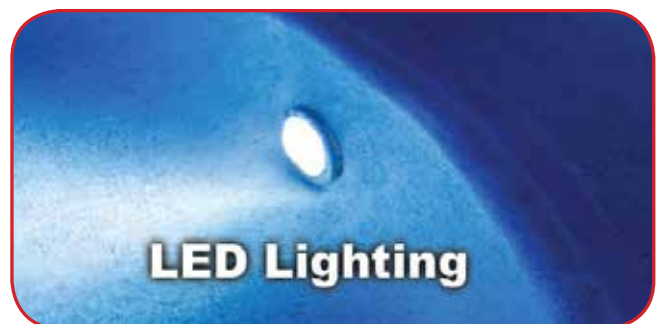
- **2" socket x 2.5" spigot**
- **One piece ABS body**
- **All stainless steel hardware**
- **Includes collar extension**



Winter Cover

WINTER COVER – BEADED & CUSTOM FIT

Want to make spring clean up easier? Be sure to purchase a custom fitted winter cover that comes with a 7-Year Warranty!



LED Lighting

MULTI-COLOR LED LIGHT

Turn your backyard into a resort at night by adding a multi-colored LED light!

IMPORTANT: The "No Diving" and other Warning signage provided must be installed on each pool as indicated in the instructions provided.

NOTE: In some photos of the pools in the brochure (or web site), the "No Diving" and other Warning signage may not be visible, such Warning Signage must be installed as indicated in the instructions provided.

Hollowell Industries, Inc. stands behind every product we produce pursuant to those representations which are stated in our written warranties. Your dealer/builder/installer/contractor is an independent business and not an agent/representative or employee of Hollowell Industries, Inc. We cannot and do not accept any responsibility for any representations, statements or contracts made by any dealer/builder/installer or contractor.



Visit our website at www.doughboypools.com

315 N Sebastian • West Helena, AR 72390 • 866-DOUGHBOY